

Design 5435 • Socks

Size 2/3 [34/35] and 6½/7½ [40/41]

Directions for the smaller size are before the parentheses, with larger sizes inside. If there is only one figure, it applies to all sizes.

All measurements are in centimeters (cm). For approximate inch sizes simply multiply by 0.4.

Materials: yarn **Schachenmayr**, quality **Regia Cotton**, 100 g #01 white.

2-3 mm [size 0-3] double-pointed needles, **or size to obtain gauge.**

Stockinet stitch (st-st): K RS rows; P WS rows; in rounds K all sts.

Basic pattern: work all rounds foll chart, rep motif throughout.

Work round 1 once, then rep rounds 2-9 throughout for patt.

Note: on every 9th round of patt K 1st st., and cross last st. on needle 4 with 1st st. on needle 1 at end of round.

Gauge: 30 sts. and 42 rows/rounds each to 4" [10 cm].

METHOD (make 2 alike)

Cast on 60(72) sts. and work in basic patt. When work measures about 12 cm work foot foll our general Foot Guide. Cont over the 30(36) sts. on needles 1 and 4 for 26(30) rows in open rows in st-st for heel, working K2 tog 2(4) times evenly across 1st row =28(32) heel sts.

To **turn heel** arrange sts. on 3 needles = 9(10) sts. at each outer edge, and 10(12) sts. for heel flap.

Cont in rounds and work in st-st over sts. on needles 1 and 4, and in basic patt over sts. on needles 2 and 3. At the same time, on 1st round pick up 13(15) sts. along each side edge of heel flap and 1 st. between needles 1 and 2 and between needles 3 and 4 = 19(22) sts. each on needles 1 and 4.

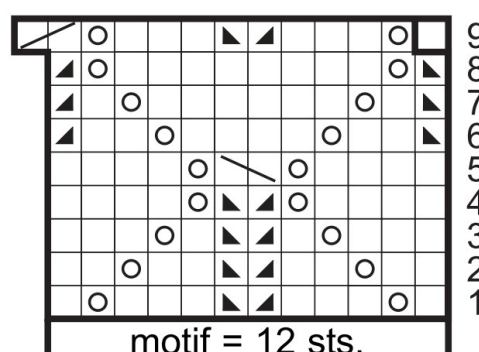
For **gusset** dec on every 3rd round as foll: work to 3 from end of needle 1 and K2 tog 5(6) times, K last st.; on needle 4 work K1, then a slip dec knitwise over sts. 2-3 = 14(16) sts. each on needles 1 and 4.

When foot measures about 18(21) cm K 1 round, working K2 tog evenly across needles 2 and 3 2(4) times



= 14(16) sts. on each needle. Work toes in st-st foll our general Foot Guide. Bring the double yarn through rem 8 sts., pull up firmly and fasten off.

Chart



Legend

- = K1
- ▲ = K2 tog
- ▴ = K2 tog tbl
- = 1 yarn-over

☐ = slip 1 onto a CN and leave at front of work, K1, then K1 from CN

☐ = slip 1 onto a CN and leave at back of work, K1,